

# Skid Steer Bucket Mixer Operation Manual



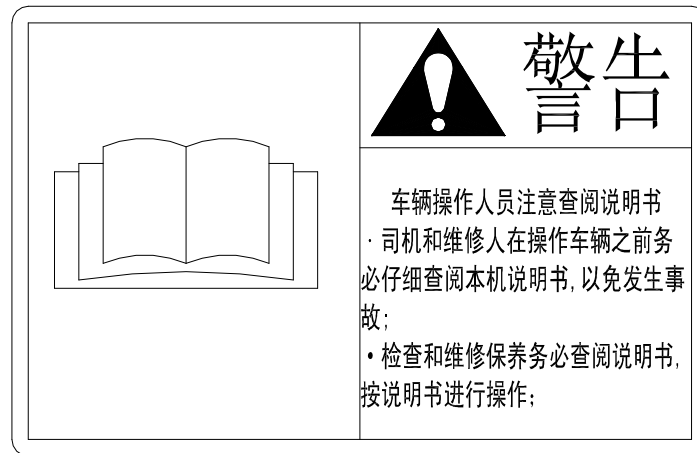
## Security Warning

**Before using Skid Steer Mixer, please read the following carefully to avoid harm to yourself and others due to improper operation of the machine.**

1. When the loader is equipped with accessories for normal work, no one is allowed to stand under the big arm, and no overloading, super high or speeding is allowed.
2. Before installing accessories, check whether the oil connection on the accessories is reliable and whether the bolts in the connection parts are locked. If any problem is found, it should be handled in time to avoid oil leakage and air leakage in the oil circuit.
3. When the loader is working normally, it is not allowed to disassemble and repair the accessories.
4. When the fittings work, all kinds of oil connections are normal, try not to disconnect and connect the hydraulic oil, etc., so as to avoid oil ejection to human eyes, skin and other damage.
5. When installing and disassembling various accessories, the big arm of the loader should be slowly placed to the lowest place that can ensure disassembly, and do not disassemble and replace various accessories when the big arm is raised high, so as to avoid injury caused by the big arm falling.
6. When attaching equipment, the human body, clothes, jewelry, etc. should be kept away from the high-speed rotating parts, hot parts and oil circuits attached to the equipment to avoid injury to people.

## Warning

1. The driver of loader must read this operation manual carefully before using the equipment, and be familiar with the structural identification, technical performance, use requirements, technical operation and maintenance of this equipment.



2. The driver of loader should pay attention to and remind others to guard against the crushing risk of the attached equipment when using the equipment.

## **Introduction**

1. In order to help users understand the structure of the sliding loader, master the operation technology, and be able to work normally and reliably, we have written this manual, which briefly describes the general knowledge in the use, repair, maintenance, etc., for users' reference. Operators must read this manual carefully before use.

2. The user shall use the product and perform maintenance, adjustment and overhaul according to the product performance specified in this manual.

Due to the continuous improvement of the machine structure in practice, the actual structure may be inconsistent with the content described in this operation manual.

Unless we modify it in time, please refer to the actual structure attached to the loader.

3. When the company's products leave the factory, they are inspected strictly according to the corresponding standards to ensure the quality of the products, from the date of the factory for 6 months, under the conditions of normal use and storage, where the mechanical failure or normal use due to manufacturing quality problems occurs, the company is free to repair or replace the user.

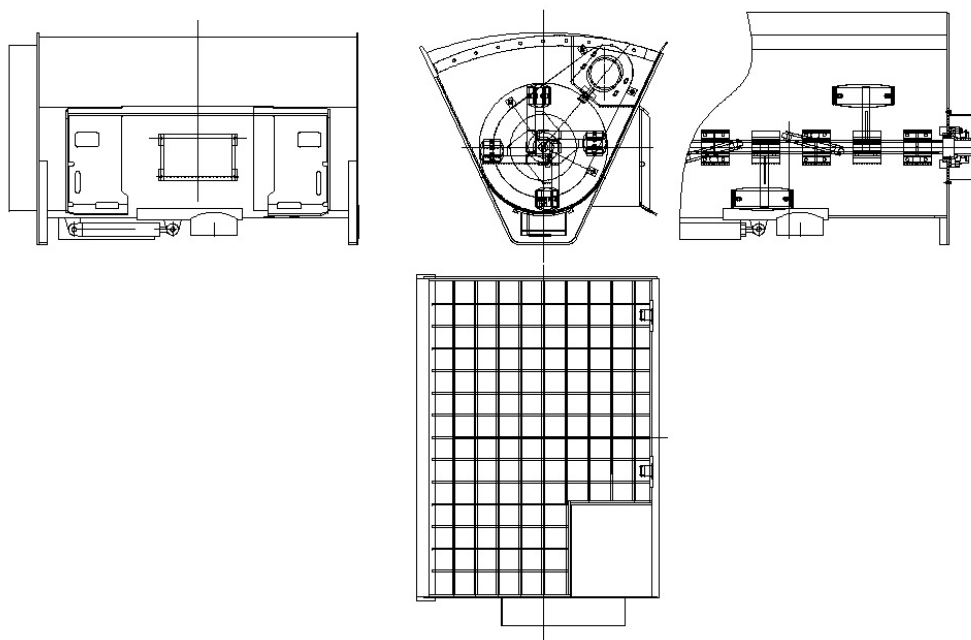
# JB450 bucket Mixer User manual

## 1. Main working parameters

- 1.1 Maximum bucket capacity: 0.45 cubic meters
- 1.2 Feed capacity: 0.2 cubic meters
- 1.3 Working pressure of hydraulic system: 16~25MPa
- 1.4 Maximum discharge capacity: 0.13 cubic meters
- 1.5 Mixing time: under 60 seconds
- 1.6 Mixing shaft speed: 60 RPM
- 1.7 Overall dimensions: L1095 mm X W1450 mm X H1008 mm
- 1.8 Weight:  $510 \pm 5$ kg

## 2. Main structure

The mixer belongs to a small horizontal single-axis forced bucket concrete mixer. Mainly used for mixing cement and fine sand, the main components are: bucket assembly, chain drive mechanism, mixing shaft assembly, operation discharge mechanism, fence cover, and hydraulic motor system, etc., the product appearance please see the following figure 1.



### **3. Use precautions**

3.1. The slip loader installed with the mixer shall be placed in a solid place, and the parking brake shall be used for effective braking.

3.2, before starting the mixer, check whether the controller and parts are good.

There must be no foreign matter in the bucket.

3.3 When the mixer is operating, it is strictly prohibited to pass or stay in front of the bucket. The mixer bucket should be fixed after the work is finished.

3.4 When the mixer is running, the hands and feet or any other tools shall not be extended into the mixer to avoid injury to the human body or damage to the mixer.

3.5. During on-site maintenance, the mixer bucket should be fixed and the sliding machine should be stopped. When disassembling the mixer shaft, there should be supervision outside.

3.6, when using JB450 bucket mixer, the loading amount shall not exceed 1/2 of the bucket capacity, so as not to cause material spatter and motor overload, affecting work efficiency.

3.7 When opening the discharge door, the throttle of the main engine of the sliding machine should be operated to a small degree, and the speed of the stirring shaft should be less than 20 RPM to prevent excessive discharge overflow.

3.8 Under normal circumstances, the mixing operation should be carried out when the mixing shaft is rotating, in order to prevent the motor from starting over and affecting the service life of the motor.

3.9, after each mixing operation, the working parts of the mixer should be cleaned.

3.10. There is a water leakage inspection port at the lower part of bearing seat B. In the use of the project, if water leakage is found here, it indicates that the seal fails and the seal should be replaced in time.

Special warning: When the mixer is operating, the management is required to warn non-staff not to approach the machine, so as to avoid possible injury.