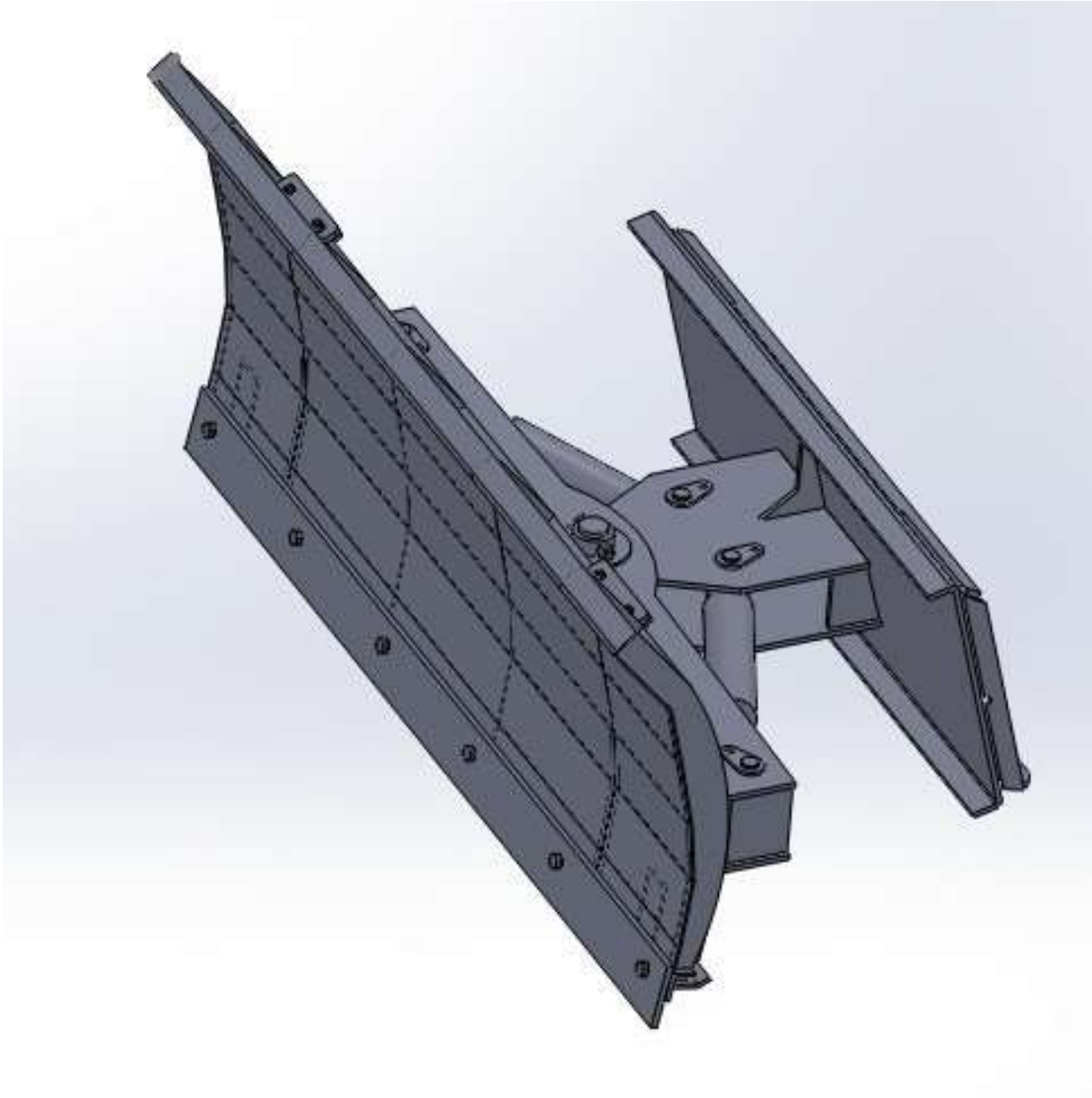


# SKID STEER SNOW PLOW MANUAL



**This manual provides information on the safety, operation, maintenance, maintenance and repair of snow plow. In order to keep your snow plow in good condition, please read and understand this manual carefully, and accept its advice.**

**At the same time, our company will continue to upgrade and improve the technology of the product, without notice, please refer to the actual product.**

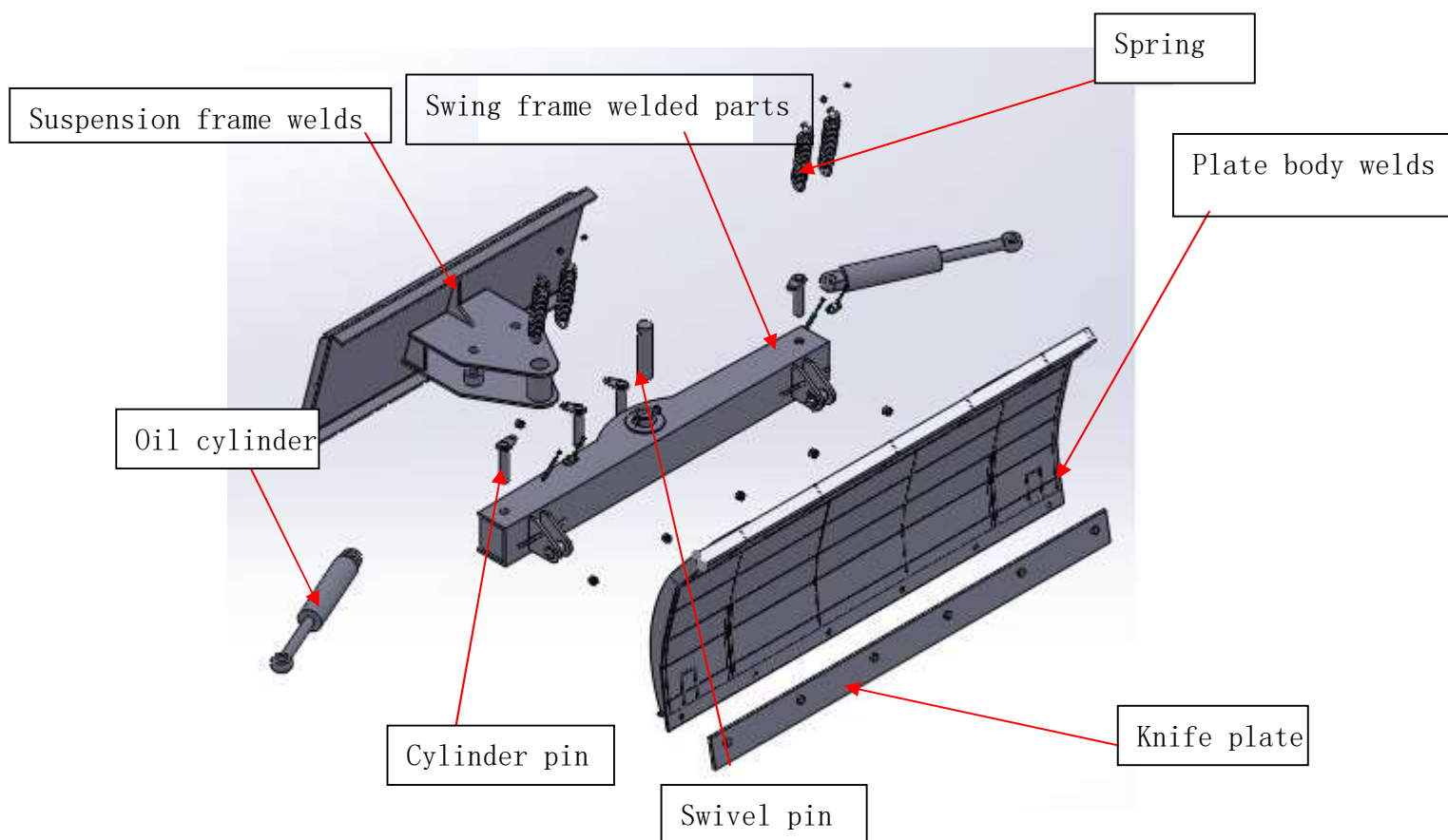
## A.PRODUCT INTRODUCTION

This snow plow is suspended on the skid steer loader machine, its hydraulic power comes from the skid steer loader engineering machine, mainly used in roads, airports, ports, docks, cities, gardens and sanitation departments for snow sweeping and other work.

### 二、 Technical parameter

	72 Inches	84 Inches
Working width (mm)	1828	2134
Size (mm)	1095X1828X 712	1095X2134X712
Swing Angle	$\pm 30^\circ$	$\pm 30^\circ$
Working pressure	16~21Mpa	16~21Mpa

### Structure Diagram



## **B. Assembly**

The snow plow is suspended at the front of the skid steer machine, embedded into the quick change clamp through the engineering hanger, and the pin is pulled down to lock. Finally, the diagonal hook is suspended from the arm dowel. The hydraulic tubing of the excavator with a quick connector is connected to the hydraulic system of the engineering machine.

Installation steps:

- 1) Check all connections and make sure that each connection is effectively fixed;
- 2) Put the snow plow firmly, drive the skid steer loader, make the standard hanger of the front of the skid steer loader close to the quick change clamp of the snow plow, and fix the snow plow on the standard hanger of the engineering machine;
- 3) High pressure oil hose installation can not be twisted, to prevent squeezing, do not pull too tight;
- 4) When installing, apply lubricant on each connecting shaft to make them rotate freely;
- 5) The skid steer loader moves forward, and the snow plow can work normally at this time.

## **C. Use check**

- 1, The new machine should be checked after 2 hours of operation, whether the fasteners are loose, whether the pull pin is installed in place, whether the cylinder and the connecting mechanism are loose.
2. Whether the oil circuit of the hydraulic system is well, and whether there is leakage or damage in the connection part of the pipeline.
3. The above items must be checked before and after each work.

Note: 32# hydraulic oil must be used in winter, which can reach minus 35 degrees Celsius for normal use, and new hydraulic oil must be replaced before use every year.